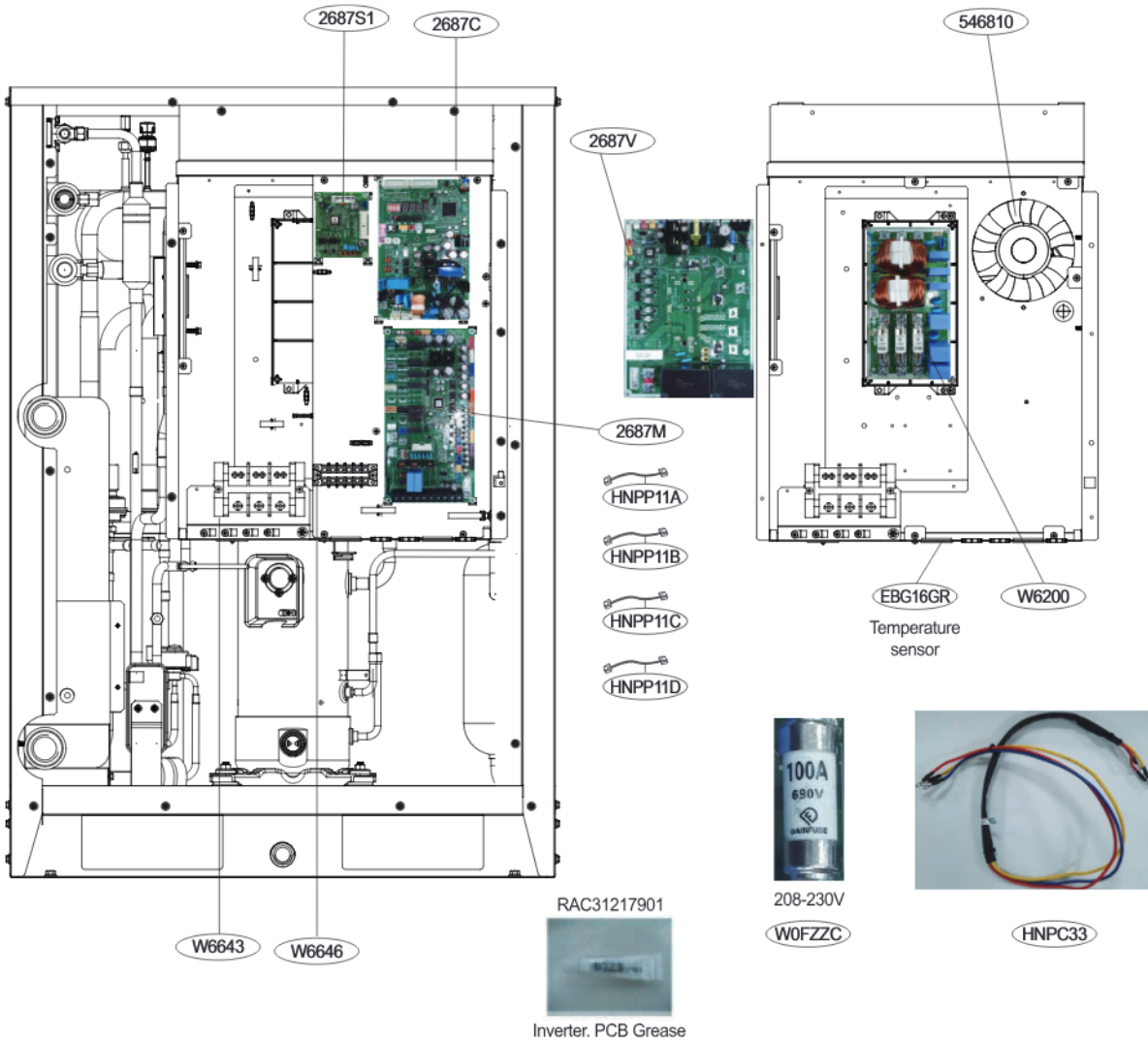
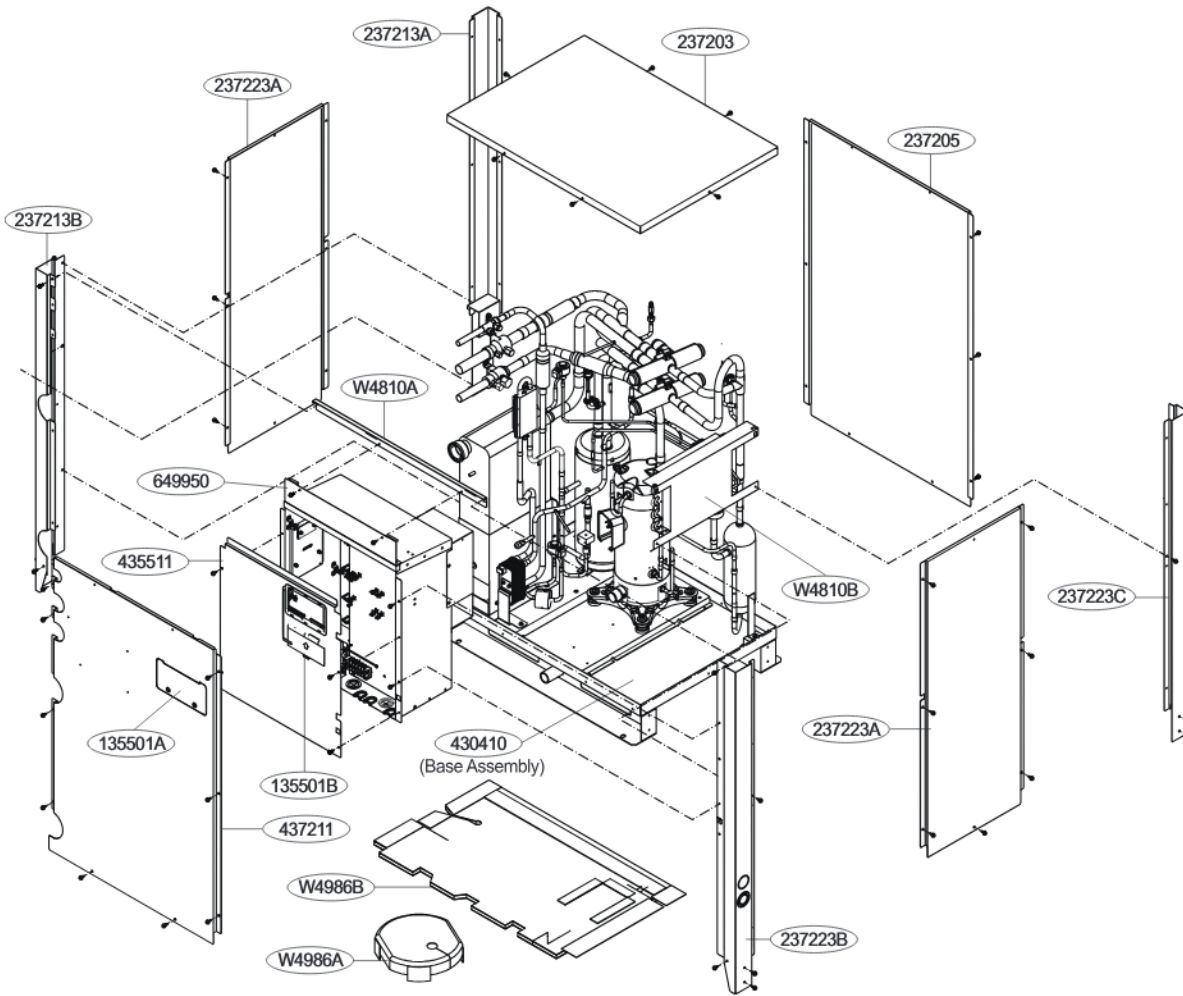


A(C)RWM***BAS5(208-230V)

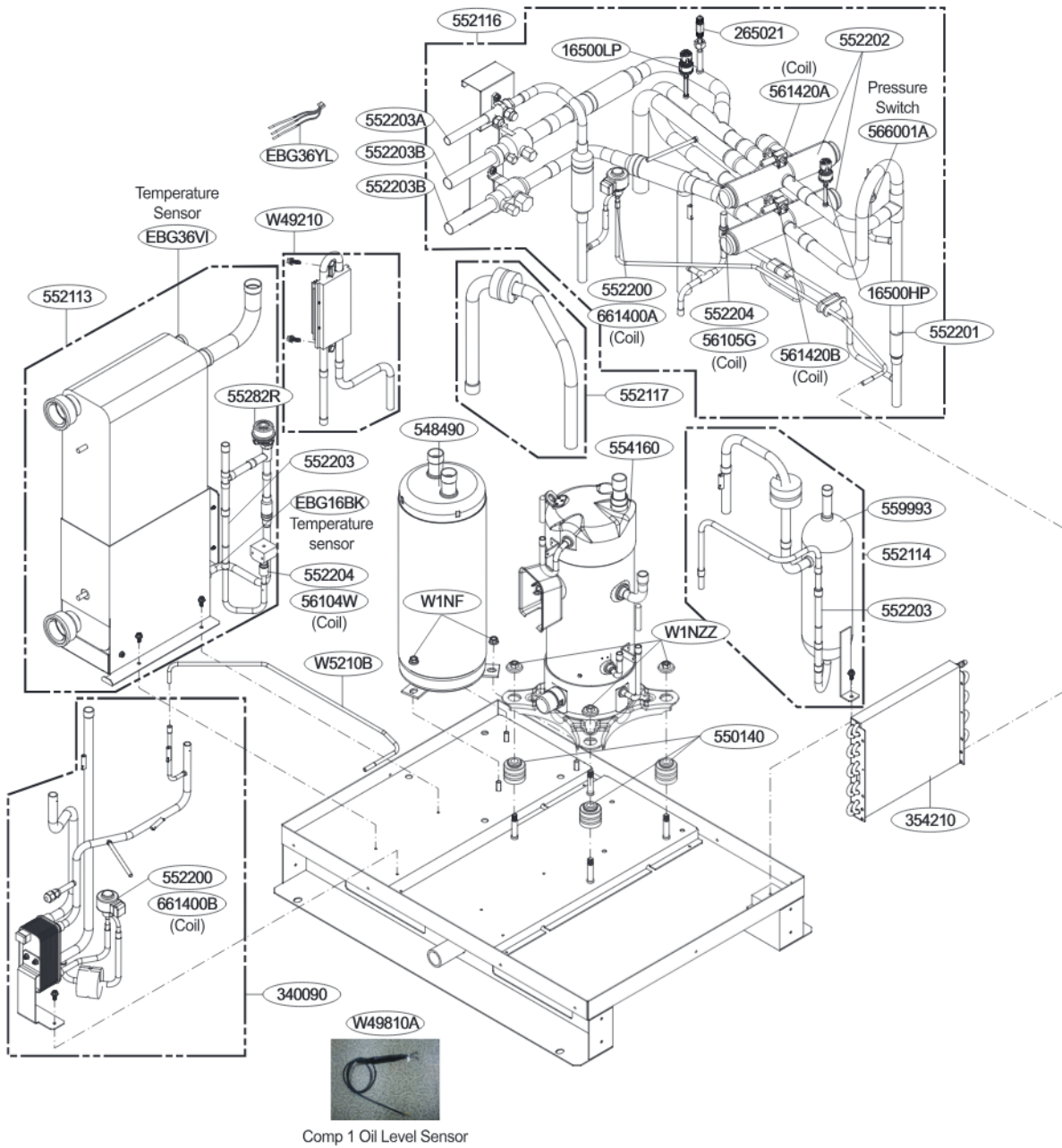


Part	Loc.No	Harness location	Housing Color
Harness,Multi	HNPC33	Power Cable (Inv. PCB ↔ Comp)	-
Harness,Single	HNPP11A	Communication Cable (Main PCB ↔ Inv. PCB)	WH - BL
Harness,Single	HNPP11B	Communication Cable (IDU Communication PCB ↔ Main PCB)	WH - WH
Harness,Single	HNPP11C	Communication Cable (Main PCB ↔ External PCB)	BL-BL
Harness Single	HNPP11D	Communication Cable (Main PCB ↔ External PCB)	WH - WH

ARWM****AS5



ARWM072*AS5



Part	Loc.No	Sensor location	Housing Color
Temp. Sensor 1	EBG36YL	Liquid Pipe + Heat Canceler Out +Sub-Cool Out	Yellow
Temp. Sensor 2	EBG36VI	Discharge + Suction + Water In	Violet
Temp. Sensor 3	EBG16BK	Water Out	Black
Temp. Sensor 4	EBG16GR	Air	Green
Temp. Sensor 5	EBG13WH	INV IGBT	White